

July 8, 2022 The 411 on Washtenaw's Arts + Creative Industries | [View in browser](#)

Creative Washtenaw

arts+creative industries=impact

Calling Artists & Creative Workers in Washtenaw County!

Creative Washtenaw Votes Arts + Creative Industries 411 for Candidates, Elected Officials and Public Policymakers

With Special Guest: Nina Ozlu Tunceli, Executive Director of Americans for the Arts Action Fund

**July 8, 8:30 - 10:30 a.m.
Washtenaw County Learning Resource Center
4135 Washtenaw Ave. Ann Arbor, MI 48108**

~ In Person Event ~

Join us on July 8 to Hear and Share Stories with Public Policymakers in Washtenaw County!

Working from the [Americans for the Arts 10 Reasons to Invest in The Arts 2022](#), the Creative Washtenaw Votes program includes local artists and creative workers sharing stories that demonstrate how the arts + creative industries unify communities, improve well-being, drive tourism, spark creativity and improve mental health and wellness. We are fortunate to host a special guest, [Nina Ozlu Tunceli](#), Executive Director of [Americans for the Arts Action Fund](#) who will offer a national view of the creative industries.

We believe that candidates and elected officials' leadership plus strategic public policy and investment can universally put the arts + creative industries on the public agenda.

Working together, we can make every community in Washtenaw County and Michigan a great place for ALL to create, live, work, learn, play and visit!

The July 8 Schedule

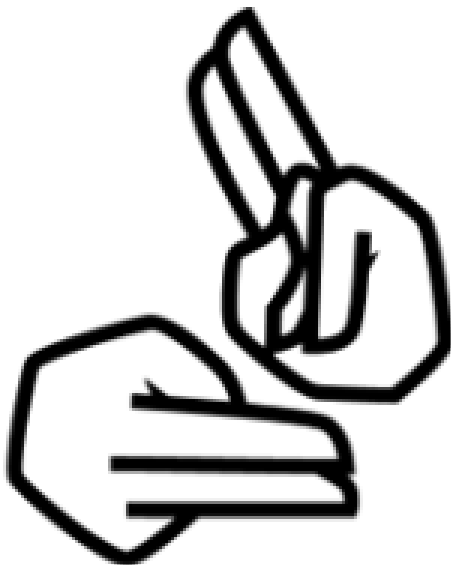
8:30 - 9 a.m. - Meet and Greet

Mix and mingle with elected officials, public administrators and candidates over a cup of coffee.

9 - 10:30 a.m. - The Ten Reasons

Led by Washtenaw County artists and creative workers telling their stories, this interactive session will inform candidates, elected officials and administrators how setting public policy and investing in the arts + creative industries positively impacts your community in multiple ways. If you are interested in speaking at this event, please contact us at info@creativewashtenaw.org

Register to Attend by July 5! [Click here!](#)



Creative Washtenaw Votes 2022 Candidate Survey

Following the July 8 event, Creative Washtenaw will distribute its candidate survey to those running for specific offices in Washtenaw County about their views on the arts + creative industries, especially in regards to public policy and investment.

All candidate responses and non-responses are published verbatim and released before the primary election to the media and Creative Washtenaw's members who reach tens of thousands of Washtenaw County residents who value and are invested in the arts + creative industries.

ASL Interpretation Provided

We are pleased to announce that we will be providing American Sign Language interpretation services at this event. We welcome Ms. Lindy Brown who will be providing on-site American Sign Language (ASL) interpretation for those individuals who would benefit from this. As accessibility is very important to us, we hope that this service will remove communication barriers so that more stories and sentiments can be equally shared, accessed and enjoyed by all in attendance.

Please contact us in advance of the session if you have any special requests, concerns or questions!

Contact Creative Washtenaw at info@creativewashtenaw.org

Creative Washtenaw: Arts + Creative Industries = Impact

Creative Washtenaw is the arts + creative industry authority in Washtenaw County. A regional agency, its mission is to advocate for and support artists, creative workers and businesses to ensure that the greater Ann Arbor, Michigan, region remains a great

place to create, live, work, learn, play and visit.

The intrinsic and aesthetic values of the arts and creativity are determining factors of success for the members of Creative Washtenaw: Creative people from students to industry experts leading the sector locally, nationally and internationally. They are professionals and amateurs who have creative practices, own creative businesses, hold creative jobs in profit, nonprofit and government entities; and offer creative products, services and programs throughout the Washtenaw community.

Creative Washtenaw serves Ann Arbor, Chelsea, Dexter, Manchester, Milan, Saline, Whitmore Lake and Ypsilanti plus the 21 townships in the county. It is committed to, forever evolving, learning and informing about diversity, equity, inclusion and justice.

Creative Washtenaw is supported by its members, [The National Endowment for the Arts](#) and the [Michigan Arts and Culture Council](#).

For more information, please go to creativewashtenaw.org or call 734-213-2733.



[Subscribe](#) | [Unsubscribe](#) | [Forward](#) | [View in browser](#)

Thank you for subscribing to this e-newsletter or requesting updates and alerts from Creative Washtenaw. If you no longer wish to receive this e-newsletter, please click the unsubscribe link and follow the quick instructions.

Creative Washtenaw, 1100 North Main Street, #A Ann Arbor, MI 48104