

Creative Washtenaw

arts+creative industries=impact

Artists & Creative Workers in Washtenaw County Should Attend

Candidates, Elected Officials & Public Administrators
Connect with Important Voters & Constituents

Creative Washtenaw Votes
Arts + Creative Industries 411

July 8, 8:30 - 10:30 a.m.
Washtenaw County Resource Learning Center
[4135 Washtenaw Ave, Ann Arbor, MI 48108](https://www.washtenawcountymi.gov/411)

The Ten Reasons Arts & Creative Industries are Worthy of Attention

The interconnection of the arts + creative industries to all community and economic sectors is real. Data, concrete community impact examples and personal, life-changing stories and experiences tell the true story.

Candidates and elected officials' leadership plus strategic public policy and investment can universally put the arts + creative industries on the public agenda.

Let's work together to make every community in Washtenaw County and Michigan a great place for ALL to create, live, work, learn, play and visit!

The July 8 Schedule

8:30 - 9 a.m. - Meet and Greet

Elected officials, public administrators and candidates mix and mingle over a cup of coffee with artists + creative workers.

9 - 10:30 a.m. - The Ten Reasons

Led by Washtenaw County artists and creative workers telling their stories, this interactive session will inform candidates, elected officials and administrators how setting public policy and investing in the arts + creative industries positively impacts your community in multiple ways.



[Click Here to Register by July 5!](#)

Participate in this Important National Economic Impact Study Arts & Economic Prosperity 6



Are you a nonprofit and/or 501c3 charity with a Washtenaw County address? If so, you may qualify to help us collect surveys.

The study requires that we collect detailed information from eligible nonprofit arts and cultural organizations. Your charge (if you accept it) is to acquire **50 surveys from individuals attending your arts and cultural performances, events and exhibitions that take place throughout Washtenaw County.**

Our local nonprofit arts and culture organizations have been and will continue to be critical to our economic recovery. We appreciate your help to collect this data for AEP6.

If this sounds like you, please fill out the form via the button below by Aug. 31.

Please contact us with any questions at 734-213-2733 or via email: AEP6_Survey@creativewashtenaw.org

Click to Register to Participate in
AEP6

Creative Washtenaw Is Asking YOU to Participate in the Arts & Economic Prosperity Study

[Americans for the Arts \(AFTA\)](#), the nation's leading nonprofit organization for advancing the arts in America, has conducted economic impact studies in more than 5400 U.S. communities and states. (Washtenaw County has participated twice, the last time being for AEP5 study in 2017.) Creative Washtenaw is partnering with AFTA to conduct the [Arts & Economic Prosperity 6 \(AEP6\)](#) Economic Impact Study for its service area of Washtenaw County.

AEP6 will provide real-time data to support the argument that Washtenaw County's arts + creative organizations are essential to the quality of life and place in our community. While part of a national study, our reports will be based on spending by our own local nonprofit arts and culture organizations as well as the event-related spending by their audiences (at local retail, parking and restaurant establishments). We believe this important research tool will demonstrate that when we invest our dollars in the arts, we are not doing so at the expense of economic development. Rather, we are investing in an industry that strengthens our local economy.

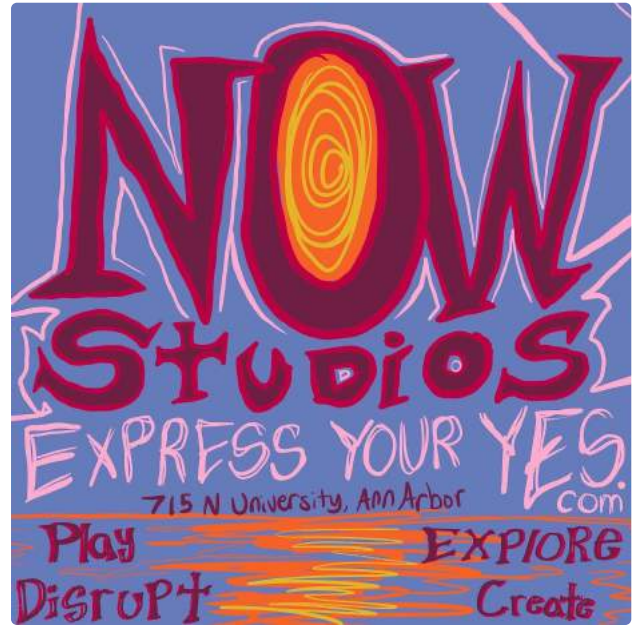
AEP6 will also assess how the COVID-19 pandemic has affected the arts + creative sector since the AEP5 study was released in 2017. The national study is now underway and continues through the end of April 2023. A final published report will document the economic impact and employment data within the local creative sector. Thank you and your community in helping us make the case why the arts + creative industries are essential to economic recovery in Washtenaw county!

[Creative Washtenaw](#) and the Washtenaw County AEP6 project are supported in part, by Creative Washtenaw members, Destination Ann Arbor, the Michigan Arts & Culture Council and the National Endowment for the Arts.



AEP6 is Sponsored by Destination Ann Arbor

Creative Washtenaw Happy Hour #30



CWHH #30 NOW Studios, Ann Arbor

June 29, 2022 - 4:30 - 6 p.m.

CWHH is our easy-no-set-agenda monthly gathering for everyone working or playing in the arts + creative industries in Washtenaw County or who are Creative Washtenaw members. The party and the conversation change every month. It's casual and fun. Join us. We hope to see you there!

Light refreshments and snacks provided. [Learn more about CWHH.](#)

[Click to Register for CWHH#30](#)

**Michigan Arts & Culture Council (MACC)
FY23 Minigrant Cycle Underway!
Grants due Aug. 3**

Apply to Be A Grant Reviewer!

Grant reviewers are very important to the minigrant process. Reviewers represent their community's values and understand the arts and cultural programs that will best serve their regions. Serving as a minigrant reviewer is a fabulous way to learn about grant writing and reviewing from the funder's perspective. If you're interested, [click here to apply!](#)



Arts & Cultural Project Minigrants

Arts & Cultural Projects Minigrants provide special opportunities to address local arts and cultural needs. These projects connect communities with the world by exploring, sharing and supporting creative expression. **Grant amount up to \$4,000.**

Professional & Organizational Development (POD) Minigrants

Professional & Organizational Development minigrants assist nonprofit arts and cultural organizations, artists, cultural specialists, administrators and educators with opportunities that specifically improve their management and/or bring the individual or the organization to another level artistically. **Grant amount up to \$1,500.**

Two K-12 Schools Arts + Creative Education Grants

Arts + Creative Education Equipment Grants

Michigan K-12 schools are eligible for grants of **up to \$1,500** to pay for arts equipment (including repairs of arts equipment) or supplies being used within the classroom/school setting.

Arts + Creative Bus Grants

Michigan K-12 schools are eligible for grants of **up to \$500** to pay for transportation cost for an arts or culture related field trip.



Region 9 Counties
Hillsdale
Jackson
Lenawee
Livingston
Monroe
Jackson

Want more information on grants?

We encourage you to visit our [Region 9 Minigrants page](#) for helpful information on grant eligibility, application process, important dates and more!

Questions? Contact Creative Washtenaw at 734.213.2733 or info@creativewashtenaw.org.

creative:impact on WEMU 89.1 FM



Tune-in to [creative:impact](#) to meet creative guests rooted in Washtenaw County and explore how their creative businesses, products, programs and services impact and add to our local quality of life, place and economy. [creative:impact](#) is hosted by Deb Polich, president/CEO of [Creative Washtenaw](#) and airs Tuesdays on 89.1 WEMU during Morning Edition at 7:49 a.m. and 9:49 a.m. Find archive editions [here](#). Send your ideas for guests to info@creativewashtenaw.org with **creative:impact idea** in the header.



Pictured: Inger Schultz

Amplifying stories of the Great Lakes

June 21, 2022 - Huron, Ontario, Michigan, Erie and Superior. These magnificent Great Lakes transcend borders connecting two countries, eight states and two provinces. Long the fascination of writers, much has been written about these deep-water lakes. Join Deb Polich on this edition of "creative:impact" to meet Inger Schultz, co-founder of the Library of the Great Lakes.

[Listen here.](#)



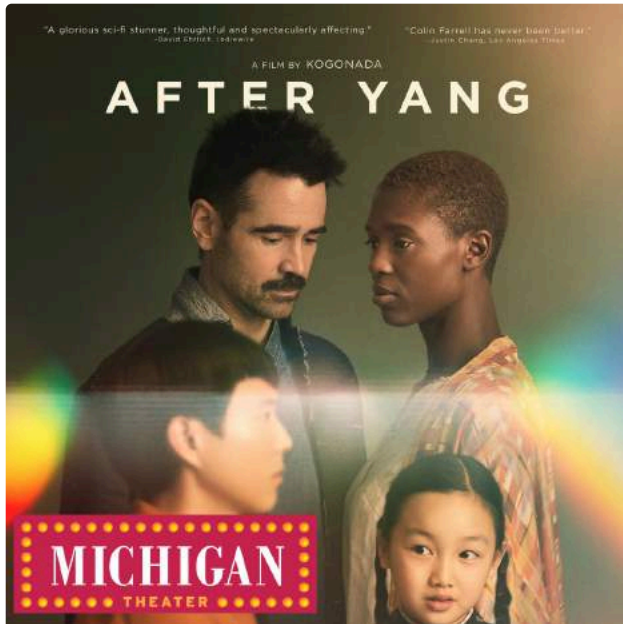
Pictured: Professor Mark Clague with his new book, released on Flag Day, June 14.

O say can you hear?

June 14, 2022 - There are so many American myths: the Mayflower Story, George Washington never telling a lie, and then there is Francis Scott Key penning the lyrics to what became our national anthem. How much is of the "Star-Spangled Banner" story is true? Join Deb Polich on this edition of "creative:impact." She welcomes back musicologist Mark Clague, whose new book, "O Say Can You Hear?" breaks down the music from the myth.

[Listen here.](#)

CW Member News & Events



Pictured: *After Yang*, Tonight at the State Theatre. Presented by the Michigan Theater. See details below.



Image Courtesy of the Great Lakes Chamber Music Festival. Performances run from June 10- 25 at various times and locations. See details below.



Pictured: Deborah Meadows of the African American Cultural & Historical Museum of Washtenaw County, presenting a past "Underground Railroad Bus Tour." Upcoming tour on June 25. See details below.

FREE OUTDOOR CONCERT! WASHTEAW COMMUNITY CONCERT BAND

STRIKE UP THE BAND

Thursday, July 21, 2022 • 7:30 PM
at German Park
Details at WCCBand.org

season sponsor
YANKEE AIR MUSEUM

concert sponsor
CHARLENE HANCOCK
BECKY HORVATH

Image Courtesy of the Washtenaw Community Concert Band. More details below.

Enjoy programs and presentations from your arts + creative community.

- Don't see your event listed? Become a [CW member](#) to enjoy this perk!
- Get an up to date calendar of events at the [Ann Arbor Observer](#).

Tonight! Michigan Theater Presents "After Yang" Plus Post-Film Discussion

After Yang plays Wednesday, June 22 at 7 p.m., at [The Michigan Theater](#) as part of the Science on Screen series with special guest Christien White of *imagine chat* who will lead a post-film discussion.

African American Cultural & Historical Museum of Washtenaw County Presents "Underground Railroad Bus Tour"

June 25 from 2 - 5 p.m. AACHM board member Deborah Meadows leads a bus tour of Ypsilanti and Pittsfield Township sites that were part of the Underground Railroad and of the historic African American community. [Learn more about tickets and logistics here.](#)

The University of Michigan History Museum Science Forum Demos Presents "How to Become a Fossil"

June 25 at 3 p.m. Hands-on 20-minute family-oriented demo exploring how fossils form, what parts of animals can become fossilized and many other fossil-related things. For age 5+. [Learn more!](#)

Great Lakes Chamber Music Festival 2022 Season

For its 29th season, the Great Lakes Chamber Music Festival has drawn inspiration from a universal source: nature. Performances run from June 10- 25 at various times and locations. Featuring 21 concerts at 10 venues across southeast

Michigan, including over 50 artists from around the country. [Learn more!](#)

The State Theatre Presents “Ukraine: The Birth of a Nation”

June 26 at 2 p.m. Free screening of 4 films (about 50 min. each)—2 screenings on June 12 and 2 on June 26—dedicated to the cultural and political history of Ukraine. Followed by discussion. [Learn more!](#)

Ann Arbor Storytellers Guild - Monthly Guild Meeting

All invited to listen to guild members swap stories or bring their own to tell. 2 - 3:30 p.m., for URL [preregister here](#). Free event.

U-M Matthaei Botanical Gardens Presents "Shakespeare in the Arb" 2022 at U-M Nichols Arboretum

Directed by Kate Mendeloff with Carol Gray and Graham Atk and presented by Nichols Arboretum and the Residential College, "Shakespeare in the Arb" is an Ann Arbor summer tradition. This year's featured play, "A Midsummer Night's Dream," will run from June 2 - June 26. [Find times, event and ticket information here.](#)

Bank of Ann Arbor Presents Sonic Lunch

Starting in 2008, Sonic Lunch is a free outdoor, summer concert series on the corner of Liberty and Division in Ann Arbor on Thursdays from 11:30 a.m. - 1 p.m. [Find the 2022 lineup here.](#)

Purple Rose Theatre Company Presents *Sherlock Holmes and the Adventure of the Ghost Machine*

Angie Kane directs the world premiere of Livonia playwright David MacGregor's drama that imagines the Victorian sleuth, aided by Dr. Watson and Irene Adler, solving the disappearance of world-changing inventions by clients Nikola Tesla and Thomas Edison. Runs May - Aug. [Buy tickets here.](#)

Embracing Our Differences SE Michigan Exhibit

Local Artist Virtual Art Gallery on display. Featuring an outdoor exhibit of 60 billboard size images created by local, national and international artists, writers and students reflecting their interpretations of the theme “enriching our lives through diversity.” [Learn more!](#)

The Society for Musical Arts - 2021 - 2022 Concert Season

Wednesdays at 10:30 a.m. at the Ann Arbor City Club. A variety of performances and events. [Learn more about the lineup here.](#) Ann Arbor Society for Musical Arts produces six concerts annually at the Ann Arbor City Club, featuring regional artists and two annual youth music competitions: “Rosalie Edwards Youth Music Competition” (REYMC) for musicians ages 13-18 and “Young Artist Competition” for college age.

Ann Arbor Symphony Orchestra's 2022-23 Season of Performances

Experience the full spectrum of human emotion amid a thrilling season-long exploration of some of the finest music ever created. Each concert crystalizes a new, unforgettable experience of world-class music-making, right in our vibrant Ann Arbor backyard. [Learn more.](#)

Ann Arbor Summer Festival 2022 Season Lineup

Visit the Ann Arbor Summer Festival [calendar](#) to discover all the events. A2SF continues to grow as a major year-round cultural leader in Washtenaw County and as an internationally recognized celebration of arts that enriches the cultural, economic and social vitality of the region.

Library of the Great Lakes (In Partnership with Ox-Bow School of Art & Artists' Residency) Two-Author Event

Occurring on multiple dates at 7 p.m. [Learn more here!](#)

Washtenaw Community Concert Band Presents 60-Piece Free Outdoor Concert - "Strike up the Band"

Join the 60-piece Washtenaw Community Concert Band for a free outdoor concert of marches, show tunes, swing hits, folk music and more. [Learn more!](#) July 21 at 7:30 p.m. at German Park in Ann Arbor.

The 2022 Ann Arbor Art Fair July 21 - 23

The Ann Arbor Art Fair is a Midwest tradition that draws close to half a million attendees over three days in July. The Ann Arbor Art Fair is comprised of three independently juried, nonprofit art fairs that run consecutively: Ann Arbor Street Art Fair, The Original; Ann Arbor Summer Art Fair and Ann Arbor State Street Art Fair. [Learn more!](#)

Riverside Arts Center Summer Camp 2022

June 22 - August 5, 2022. Production is at the heart of making art. Artists and theorists have long acknowledged its importance as both an artistic action and an idea to be explored. [Register and learn more!](#)

The Ann Arbor Film Festival Presents Monthly Screening Series

The Ann Arbor Film Festival's monthly screening series returns on first Thursdays through November! AAFF Presents will show a different feature film every month that was originally screened at the 60th AAFF, held in March 2022. This is FREE for both AAFF Members and MTF Gold Card Members. First Thursdays will take place at the The State Theatre in Ann Arbor. [Learn more!](#)

Get Your Tickets to See Sphinx Virtuosi this Fall

Thursday, October 13 at 7 p.m. at Carnegie Hall. Sphinx Virtuosi is the most prestigious group of musicians to represent the magnificently impactful Sphinx Organization. The 2021 Carnegie Hall performance by these “top-notch string players” received an extended standing ovation for music-making described as “splendid,” “vibrant,” and “arresting” (*The New York Times*). [Get your tickets here!](#)

Want to add your events?

FOR MEMBERS: Event listings in our e-newsletter are an exclusive benefit for CW members. Are you a member? If you are, you have the option of submitting your event through the Ann Arbor Observer and Creative Washtenaw shared calendar. [Follow the steps here to get started!](#) If you would rather not share to AAO, please submit using our existing form [here](#).

NON-MEMBERS: If you are **not** a member, please submit events for consideration using [this submission form](#). Events aren't guaranteed social media or e-newsletter coverage. Not a member? [Click here for membership information](#).

Notable Transitions

[The Ann Arbor Symphony Orchestra \(A2SO\) Welcomes 14th Music Director, Earl Lee](#)

[Cultural Advocacy Network \(CAN\) Welcomes Program Coordinator, David McConnell](#) | [Cultural Advocacy Network Website](#)

[Tooshar Swain Joins Americans the the Arts \(AFTA\) as New Director of Public Policy](#)

What We're Reading + Watching

["Comic Book "Come Out! In Detroit" Narrates the History of Michigan's First Ever LGBTQ+ Pride Celebration"](#) - Michigan Humanities

["Celebrate Pride Month in Washtenaw County with these picnics and festivals"](#) - MLive

["Washtenaw United: Pride Month-Marking progress amid the battle to maintain and expand rights and protections for the LGBTQ community"](#) - WEMU

["Washtenaw United: Juneteenth and Ypsi's Black Lives Matter Boulevard"](#) - WEMU 89.1

["It's Pride month: Here is your festival guide across Michigan"](#) - Click on Detroit

["Support Black-Owned Businesses in Washtenaw County"](#) - Current Magazine

["Will Michigan's grid stand up to heat wave? What to know as temps soar"](#)- Bridge Michigan

["Examining the equity implications of culture of philanthropy"](#) - Nonprofit AF

["The Art Worlds We Want: Solidarity Art Economies"](#) - U.S. Department of Arts & Culture

["Michigan election law: Everyone wants change, common ground is the hard part"](#) - Bridge Michigan

["Washtenaw County returns to 'high' COVID community level"](#) - All About Ann Arbor

["Art Talk with Dancer and Choreographer Rohan Bhargava"](#) - National Endowment for the Arts

["From A Museum Expert: A Word of Advice for an Upcoming UMMA Exhibition"](#) - UMMA University of Michigan Museum of Art

["Michigan-Based 'Renovated to Death' Author Draws on Love of Old Houses for First Cozy Mystery Novel"](#) - PrideSource

Arts + Creative Grants & Funds

National

New York Foundation for the Arts - Grants for Artists

Applications close on June 28. Several grant opportunities available. Learn more [here](#).

The National Endowment for The Arts (NEA) Grants for Arts Projects (Second Grant Round) (For Organizations Only)

There are two Grants for Arts Projects application deadlines. Some disciplines only accept certain project types at each deadline; see the guidelines for your [project's discipline](#) for more information. Grants for Arts Projects is the principal grants program for organizations based in the United States. Applicants may request cost share/matching grants ranging from \$10,000 to \$100,000. Designated local arts agencies eligible to subgrant may request from \$10,000 to \$150,000 for subgranting programs in the Local Arts Agencies discipline. Learn more [here](#).

The National Endowment for the Arts (NEA) "Our Town" Creative Placemaking Grants Program (For Organizations Only)

Our Town is the NEA's creative placemaking grants program. Through project-based funding, the program supports activities that integrate arts, culture and design into local efforts that strengthen communities. [Apply to "Our Town" grant program](#). August 4, 2022 is the deadline to submit to [grants.gov](#). "Our Town" is one of several grants for organizations. Explore others [here](#).

Mid Atlantic Arts Foundation (MAAF) - Grants for Artists

Mid Atlantic Arts' grant programs allows artists to explore and create, provide touring engagements regionally and internationally and provides career development assistance. Choose from a variety of applications including Creative Fellowships, Jazz Road and more. One program, USArtists International, (listed below) has recently opened their applications! [Learn more and apply!](#)

USArtists International Grants Available to U.S. Performers

USArtists International supports in-person and virtual performances by American artists at engagements at international festivals and global presenting arts marketplaces outside of the United States. USAI provides grants of up to \$18,000 toward eligible expenses. Deadlines range from September 1 to March 29, depending on your performance date. [Learn more and apply!](#)

Arts Administrators of Color Emergency Fund

Arts Administrators of Color has created the Arts Leaders of Color Emergency Fund, which supports BIPOC (Black, Indigenous and [People of Color](#)) artists and arts administrators impacted by COVID-19 through \$200 microgrants. [Learn more](#).

Opera America Grants for Companies and Artists

Opera America grants awards for individuals to advance the careers of women and people of color in creative roles and highlight emerging artists. [Learn more about grants opportunities.](#)

There are several more grants available!

Please visit our website [here](#) for more listings.

Local, Regional & State

Applications Close June 30! Ann Arbor Community Foundation's Arts and Culture Racial Equity Program

AAACF is seeking opportunities to invest funds in new and existing community-based projects that are serving communities through arts and culture focusing on racial equity to support a number of programs. [Learn more and apply!](#) \$110,000 grant dollars available for Washtenaw County.

Ann Arbor Community Foundation Opens 2022 Dedicated Grants Program

This grant program is comprised of numerous Field of Interest Funds with an array of funding priorities, each Fund having its own dedicated purpose. **\$120,000** will be distributed in competitive grants to local nonprofits delivering program and services in Washtenaw County aligned with each Fund's purpose. [Learn more and apply.](#) Applicants must attend an information session. The next is [June 29 from 3 - 4 p.m.](#)

Michigan Humanities Grants - Now Open

Grant deadline September 1. If you are working on a project with public humanities programming, submit an application! [Apply here.](#)

Bridging Michigan Grants - Now Open

[Michigan Humanities](#) offering Bridging Michigan grants up to \$1,500 that can be used to spark in-depth thinking and conversation around the persistent social, economic and cultural issues of systemic inequity that divide our communities. Diverse projects from across Michigan, addressing different themes and using a variety of public humanities formats, including reflective conversations, reading series, film screenings with discussions, web projects, walking tours, public lectures, panels and the creation of exhibits are invited to apply. Click [here](#) to learn more. Click [here](#) to apply.

The National Endowment for the Arts (NEA) State & Regional Partnership Agreement Grants

The National Endowment for the Arts' State & Regional Partnership Agreement grants are awarded to the nation's [56 state and jurisdictional arts agencies](#) (SAAs), and the [six regional arts organizations](#) (RAOs). In order to enter into a state arts agency Partnership Agreement and receive federal funding from the National Endowment for the Arts, a state arts agency must comply with the [following requirements](#). Learn more about partnership agreements [here](#). Partnership Agreements grants must be submitted to [grants.gov](#) by September 29, 2022. [Visit the application calendar.](#)

Michigan Arts & Culture Council (MACC) FY23 Minigrants

[Visit Creative Washtenaw's regranting page](#) to learn more about Arts & Cultural Projects and Professional & Organizational Development (POD) grant requirements, materials and dates. Round 1 Deadline is 5 p.m. on Wednesday, Aug. 3, 2022. [Click here for the complete list of MACC grants.](#)

Updated Resources List! For a complete list of local resources, please visit our updated list [here](#). For resources beyond Washtenaw county, click [here](#).

Auditions, Calls for Art, Artist in Residencies & Workshops, Volunteers



Image Courtesy of Dexter Plein Air. Registration is still open for the 2022 Paint Dexter Plein Air Festival. Artists must register by July 1. Details below.



Harbor Beach Artist in Residence. Submit an application by July 17, 2022 for the fall program. Details below.



Michigan Medicine Gifts of Art - Call for Exhibits 2022-23. Deadline Extended to June 30! See below for details.

Ann Arbor Area Community Foundation Youth Council New Member Application

The Ann Arbor Area Community Foundation (AAACF) Youth Council brings together 25 high school students from Washtenaw County to provide a unique opportunity for youth to make a meaningful impact in the community through grant making and service. To apply for a position on the Youth Council, students must be entering 9th, 10th or 11th grade in the fall of 2022 and live in Washtenaw County. This year, 8-9 new members will be selected. [Learn more and apply by June 24, 2022.](#)

Call for Subtenant for Ann Arbor Office - West Side

Local architect with office on Ann Arbor's west side has spare furnished office for small non-profit, artist or other small business. Subtenant would have use of Wi-Fi, copier and conference table in common area. Rent negotiable. Contact David Esau of Cornerstone Design, 734.663.7580 or desau@cdiarchitects.com.

Deadline Extended to June 30! Michigan Medicine Gifts of Art - Call for Exhibits 2022/2023

Gifts of Art's rotating gallery program is intended to support the healing process by calming nerves, lifting spirits, engaging minds and thereby reducing the stress and anxiety often associated with healthcare settings. With large patient, staff and visitor populations that are diverse in every way imaginable, we strive to be inclusive and honor this diversity by mounting exhibits that reflect today's world. [Learn more!](#) Submissions close June 30, 2022.

Paint Dexter Plein Air Update - Last Call for Professional Artists

Registration is still open for the 2022 Paint Dexter Plein Air Festival. Space is limited for both professional and emerging artists. This will be the final call for the Professional Artists category as the deadline is approaching fast, so please register soon to ensure your spot. Emerging artists must register by July 1. The festival and painting begin August 15. [Apply and learn more!](#)

Harbor Beach Artist in Residence

Considering all forms of art except those that manipulate, disrupt or disturb the cottages or park's environment. [Submit here](#) by July 17, 2022 for the Fall artist in residence program.

Youth Arts Alliance - Teaching Artist Application

YAA seeks professional teaching artists to teach healing centered arts workshops to youth and their families through Washtenaw, Wayne, Jackson and Monroe counties. YAA teaching artists are expected to plan an 8-session curriculum based in artistic mediums in which they hold expertise. They will consult with the YAA Managing Director to determine the best approach for workshop structure, depending on if they will be placed with a group of youth in a detention unit, a treatment unit or a community space. Prior to starting their first workshop cycle, the teaching artist must attend a YAA teaching artist training. [Learn more and apply!](#) Please submit application materials via PDF to Lucy Cahill at lucy@youthartsalliance.org

Embracing our Differences - Southeast Michigan - Seeking Docents

Embracing Our Differences is seeking docents to help lead school trips to Gallup and Riverside Park to discuss the art about diversity, equity and inclusion. Docents may volunteer one or two days a week or half days May - Sept. 2022. [Click here to apply!](#)

Apply for a Community "Free" Space at The Sunday Artist Market

The Sunday Artisan Market offers a free booth space for use by non-profit organizations whose work benefits the community. Each Sunday, they allow a local nonprofit the opportunity to attend the market and set up a display (free of charge) to

engage in community outreach for their organization. To learn more, click [here](#).

Grant Resources for Arts and Cultural Organizations

Free resources? Oh yes! [Sign up for the Nonprofit ArtsReady Preparedness Kit!](#) In this kit, you can access resources for arts and cultural organizations through the process of developing an emergency preparedness plan. [Watch the video to learn more.](#)

Arts + Creative Industries Job Postings

[U-M Arts at Michigan - Program Specialist](#)

[All Seasons Ann Arbor, Director of Life Enrichment](#)

[Fernwood Botanical Center, Director of Development](#)

[Art to Change the World - Paid Internship \(Remote\)](#)

[Riverside Arts Center - Executive Director](#)

[Youth Arts Alliance - Teaching Artist](#)

[Ford House - Director of Education](#)

[Docent for Public Art Exhibition - Embracing our Differences SE Michigan](#)

[Ann Arbor Hands-On Museum - Several new openings.](#)

[Explore Administrative Positions at the Detroit Symphony Orchestra \(DSO\)](#)

[Explore new positions at American Alliances of Museums](#)

[Explore new positions at Michigan Nonprofit Association](#)

[Explore new positions at Americans for the Arts](#)

[Americans for the Arts - Job Bank - New Listings.](#)

If you would like to submit a job posting, please fill out our submission form [here](#).

For more listings, please visit our jobs page [here](#).

Surveys, Webinars, Reports & Studies

Six Data Visualizations of the U.S. Census Bureau's Small Business Pulse Survey

As the national [Small Business Pulse Survey](#) comes to a close, the U.S. Census Bureau compiled six charts spanning from April 2020 - April 2022, highlighting the three indexes that span the entirety of the survey. These indexes offer a numeric representation of one or more questions and provide a view into how small businesses weathered the past two years. [View the data visualizations.](#)

Capitalization Needs of Arts & Culture Organizations in Southeast Michigan: Second Edition

This report—a follow-up to the [first one](#) commissioned by CultureSource in April 2020—is one aspect of CultureSource's ongoing support of creative activity. [Access the updated 2021 report here.](#)

[Click here to subscribe to Creative Michigan Activist](#), where we list surveys at a regional and national level.

Local Advocacy & Action



Attend the Virtual Allied Media Conference - June 30 - July 3, 2022. Details below.

Local Advocacy & Action

Register for the 2022 Virtual Allied Media Conference! (Image Above)

The Virtual Allied Media Conference (AMC2022) is an opportunity to explore the intersection of art, technology, education, media and resistance/organizing - all excellent tools for your arts + creative industries tool belt! It will convene nationally both online and in-person and is open to residents of metro and downtown Detroit and communities throughout Michigan. [Learn more and register!](#)

Creative Washtenaw's Advocacy Education Resources

Visit our website page [here](#) for Advocacy & Action facts, figures and recommended reading.

[Attend the Virtual Allied Media Conference - June 30 - July 3, 2022.](#)

Looking for Statewide and Federal Action Items?

[Sign up for the Creative Michigan Activist: monthly e-news digest.](#)

Creative Washtenaw Aid Needs Your Support

Will You Help Replenish CW Aid?

Though COVID Cases Drop from "High" to "Medium" Community Level in Washtenaw County,

The Need for Economic Recovery Remains Great.

Will You Help Replenish CW Aid?

Attendance is at 45% of pre-COVID. Every surge keeps audiences away.

We continue to ride the wave of surge and recovery. Artists, creative workers and businesses are in the breach, trying to cover rent, pay off debt and stay afloat. We continue to get bombarded with requests for aid. Please join our growing list of donors who have graciously contributed funds to CW Aid. Every little bit counts. Please consider supporting our community of creatives that enrich our lives and open our hearts and minds through art and creativity. Click [here](#) to learn more about the challenges our community faces and how you can help.

Apply for Creative Washtenaw Aid

Give to Creative Washtenaw Aid

COVID-19 Resources & Updates

Washtenaw County COVID Community Level at Medium - Stay Safe!

Washtenaw County is currently at a **medium COVID-19 community level**. At this level, it is recommended that people may choose to mask at any time. People with symptoms, a positive test or exposure to someone with COVID-19 should wear a mask.

[June 21 - COVID-19 Cases Report in Washtenaw County](#)

Visit [Washtenaw County's central COVID-19 page](#). Click [here](#) for a more detailed breakdown of cases and demographics. *Not in Washtenaw County?* Find your county vaccine registration information [here](#).

Want to pick up a free pack of KN95 masks? See how to pick them up from the Health Department [here](#).

State/Regional

["New, Michigan COVID-19 cases fall about 18% in last week; total deaths are flat" - MLive](#)

[COVID-19 Michigan Case Tracker Map](#)

[New MDHHS Q&A \(Booster Shot Info\)](#)

Federal

["Why boosted Americans seem to be getting more COVID-19 infections" - CBS News](#)

[3 Ways to get COVID pills, if you've just tested positive](#)

[Know Your Treatment Options for COVID-19](#)

[Take the CDC's Coronavirus Self-Checker!](#)

For a more comprehensive list, please visit our website [here](#).



Make a COVID-19 Plan



<p><input checked="" type="checkbox"/> Make a plan for vaccination or learn if you are eligible for boosters.</p> <ul style="list-style-type: none"> Ages 5 and older can get vaccinated. Ages 12 and older can get the booster. Ages 50 and older, or 22 and older and individuals to severely immunocompromised, can schedule a second booster. <p>Learn more about vaccine and whether you're up to date at Michigan.gov/COVIDboosters.</p>	<p><input checked="" type="checkbox"/> Keep a supply of well-fitting masks.</p> <p>Masks are helpful tools to reduce COVID-19 transmission, especially if:</p> <ul style="list-style-type: none"> You are unwell or test positive for COVID-19. You have been exposed to someone with COVID-19. You are concerned about the risk of transmission in a particular setting. Remember that others may have a risk different than yours. <p>Learn more about masking at Michigan.gov/MaskUp.</p>
<p><input checked="" type="checkbox"/> Keep a supply of over-the-counter COVID-19 tests.</p> <p>Tests are useful for early detection of COVID-19, especially if:</p> <ul style="list-style-type: none"> You have symptoms of or have been exposed to COVID-19. You are traveling or will be attending a large or unmasked gathering, food service and other operating large events. <p>Over-the-counter tests are available at pharmacies and schools through Michigan's, also through Federal distribution programs. Learn more about COVID-19 testing at Michigan.gov/COVIDtests.</p>	<p><input checked="" type="checkbox"/> Learn if you are eligible for COVID-19 therapeutics.</p> <ul style="list-style-type: none"> Talk to a primary care provider about whether you are eligible for preventative antibodies or for COVID-19 antiviral treatment, if you become infected. <p>Learn more about COVID-19 therapeutics at Michigan.gov/COVIDtherapies.</p>

Arts + Creative Industries News



Join the Arts Action Fund to advance the arts and arts education in your community and across the country.

It's FREE and takes just a minute. Add your name and be counted so Congress know there are millions of arts and creative workers, businesses and citizens who insist that arts and creativity are critical to our country. [Join here for updates and calls to action.](#)

Annual Arts Action Fund membership is free and your online benefits include:

- Membership to vote on the legislative policy platforms
- Breaking news and legislative alerts from the E-Advocacy center
- Quarterly updates through Arts Action eNews
- Exclusive access to the member's only Arts Action Fund PAC

Local & State News Sources to Follow

[WEMU 89.1 FM](#) - Local news coverage plus local arts + creative coverage including [creative:impact](#) with Creative Washtenaw's own Deb Polich.

[Bridge Magazine](#) - Michigan's nonprofit, nonpartisan news organization that provides passionate and rooted Michigan readers with honest, fact-driven journalism on the state's diverse people, politics and economy.

[All About Ann Arbor](#) - offers local news, feature stories, restaurant news, sports news, latest events in town and more for Ann Arbor residents.

[Concentrate Magazine](#) - tells the narrative of Washtenaw County's narrative people and businesses, new development, cool places to live, and the best places to work and play. The weekly online magazine is published Wednesdays.

Creative Washtenaw Resources

For the fastest updates and breaking news!

- [Follow Creative Washtenaw on Facebook](#)

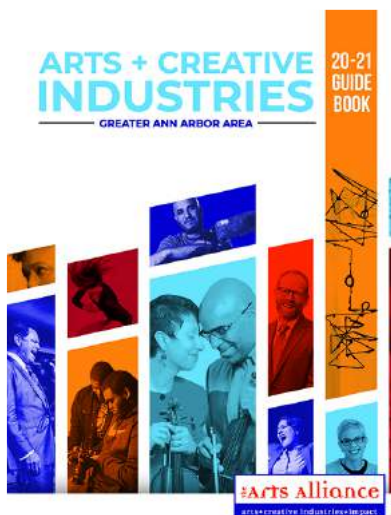
- [Follow Creative Washtenaw on Twitter](#)

Creative Washtenaw's COVID-19 Support Page

- [Resources - including advocacy, support and affiliation agencies](#)

- [Aid, assistance and grants for artists, creatives and organizations](#)

- [COVID-19](#)



The Arts + Creative Industries Guide

With links to creative members and businesses.

Featuring hundreds of artists, creative workers, businesses and ally members, this is your guide to what makes Creative Washtenaw, and the greater Ann Arbor area one of Michigan's strongest and most vibrant arts + creative industry hubs.

[Download the 20-21 Arts + Creative Industries Guide here.](#)

Creative Washtenaw: Arts + Creative Industries = Impact

Creative Washtenaw is the arts + creative industry authority in Washtenaw County. A regional agency, its mission is to support, assist, aid and act in the interest of artists, creative workers, organizations, businesses, educational and government entities to ensure that the greater Ann Arbor, Michigan, region remains a great place to create, live, work, learn, play and visit.

The intrinsic and aesthetic values of the arts and creativity are determining factors of success for Creative Washtenaw members. They include local artists and creative people – professionals, amateurs, students and industry experts leading the sector locally, nationally and internationally – those with creative practices, businesses and holding creative jobs in profit, nonprofit, educational and government entities. With deep connections to Washtenaw County, they make the greater Ann Arbor area one of Michigan's strongest and most vibrant arts + creative industry hubs.

Creative Washtenaw serves Ann Arbor, Chelsea, Dexter, Manchester, Milan, Saline, Whitmore Lake and Ypsilanti plus the 21 townships in the county. It is committed to, forever evolving and learning about diversity, equity and inclusion. This includes learning how its community defines the intrinsic and aesthetic qualities of art and creativity by the cultural expert, the credentialed scholar, the journeyed or self-taught master and/or the astute consumer of the form.

Creative Washtenaw is supported by its members, [The National Endowment for the Arts](#) and the [Michigan Arts and Culture Council](#).

For more information, please go to [Creative Washtenaw](#) or contact info@creativewashtenaw.org or call or 734-213-2733.

Creative Washtenaw Resources



[Subscribe](#) | [Unsubscribe](#) | [Forward](#) | [View in browser](#)

Thank you for subscribing to this e-newsletter or requesting updates and alerts from Creative Washtenaw. If you no longer wish to receive this e-newsletter, please click the unsubscribe link and follow the quick instructions.

Creative Washtenaw, 1100 North Main Street, St. #A Ann Arbor, MI 48104